

TEST'n'TRACK

Appliance Testing Log Book



For Portable Electrical Appliance Testing

- ▷▷ Eliminate hand written records, for In Service Safety Inspection and Testing of Electrical Equipment. Complies to AS3760
- ▷▷ Users can track and log anything that has an Appliance Testing barcode, store and transfer any type of asset information.

TEST'n'TRACK

Appliance Testing Log Book

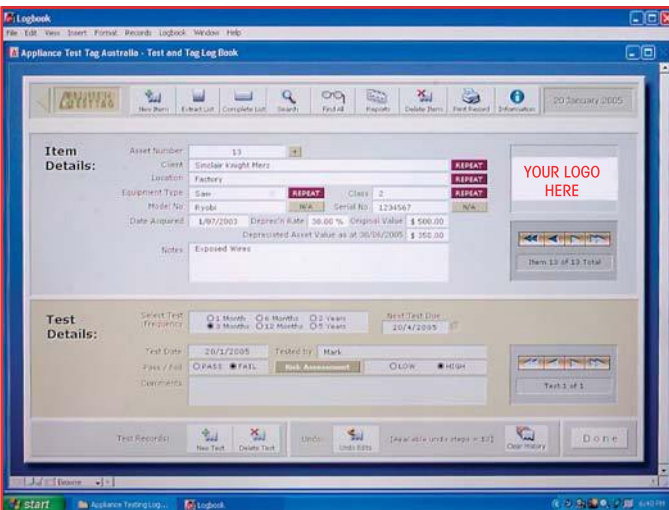
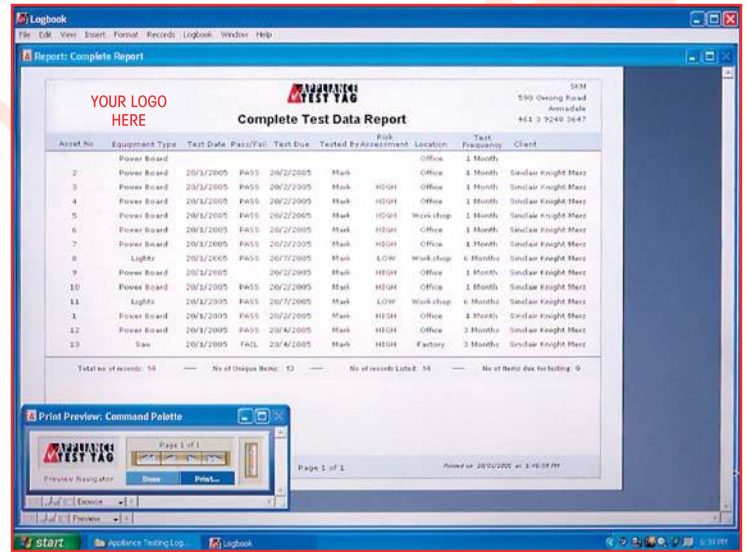
Test'n'Track is a computerized system consisting of software, hand-held computers, Appliance Test Tag Cable Markers or Asset Labels and the Patrol C25000 Portable Appliance Tester. The system provides information on the status of Electrical Equipment and the location of each asset, eliminating manual paper tracking processes while increasing accuracy and productivity.

Test'n'Track is used at point of application or service. Test results are entered via the LCD touch screen on the handheld computer. The user can enter the following information

- Asset Number (Scan barcode directly into Handheld Computer)
- Client Name
- Equipment Type
- Location of item
- Test Frequency
- Testers Name
- Pass or Fail
- Risk Assessment
- Model
- Test or Service Date
- Comments field

Features

- No Forms or Hand Written Records are needed
- Data Entry is performed via your hand held computer and then managed from Desktop Software
- User Editable Menu Lists
- Variable Test Frequency 1, 3, 6, 12 months, 2 & 5 Years
- Find Previous Test Results from Barcode Scan
- Sort and Find on Any Data Field
- Risk Assessment for Visual Inspections
- Scan through items
- Scan through tests of item history
- Load Multiple clients
- View data in Lists or Forms
- Export data (For other MS programs such as XL)
- Import Data



Benefits

- Portable, Robust and lightweight
- Fast Data Capture
- Track items for specific locations
- Provides Audit history of items Tested
- Find next tests due with the touch of a button
- Eliminates data entry errors
- No Back office Data Entry
- Increases Productivity
- Managers critical Data Instantly

Quickly generate Professional Reports for:

- Complete List of items tested
- Failed Items report
- Asset Register & Depreciation report
- Invoice directly from desktop database
- Location Report

Superior Features for Maximum Performance

The SPT 1550 is 100% compatible with Palm OS® hardware and software and offers mobile professionals significant advantages with benefits in data capture, information access and computing power. The SPT 1550 features an integrated scan engine and conveniently placed scan triggers, enabling fast, efficient, and accurate data capture. This is the smallest, lightest, and brightest engine available today, enabling the SPT 1550 to deliver premium performance bar code scanning.

The SPT 1550 comes with a generous 8 MB of RAM and 4 MB of ROM, for application or data storage needs, (stores 5000 test records) and its 33MHz processor allows applications to run at peak speeds, keeping pace with business demands. With its touch-based graphical interface, push-button controls, and backlit 160 x 160-pixel display, the SPT 1550 is easy to use, even outdoors or in dimly lit spaces.

System Requirements:

Windows Pentium 300MHz or higher, 64Mb RAM for Windows 2000, 128Mb of RAM for Windows XP; CD-ROM and Hard Disk drive. Windows XP Service pack 1. Windows 2000 Service pack 4

Optional Operating Systems and Hardware:

Pocket PC, PPT 8800, SPT 1800, SPT 2800

Accessories:

- Appliance Test Tags
- Appliance Failed Tags
- Appliance Test Tag Cable Markers
- Barcode Asset Labels
- Tested, Calibrated, Passed Labels
- SPT1550 Rubber Protective Casing
- Portable Appliance Testers
- Megasafe 26a RCD Tester

For more information contact:



MEASURE-TECH AUSTRALIA PTY LTD
PO BOX 1192, FRANKSTON VICTORIA 3199 AUSTRALIA
PH: 61 3 9770 0855 FAX: 61 3 9770 0866
sales@measuretech.com.au

www.measuretech.com.au